

biotechne®

第2波

# 神经科学特色抗体钜惠

活动时间:2019年月4月18日~6月18日

促销代码:MKT-201904-050 (渠道客户) MKT-201904-051 (直销客户)

现货促销(今日下单 明日发货)

继Novus自噬相关特色抗体火热促销之后,第二波神经科学相关抗体大促销正式开启。

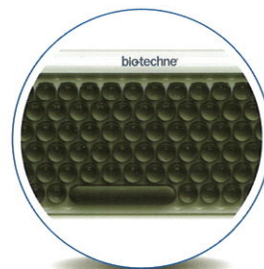
- 单笔购买3支 **一抗** 即可挑选礼品一个(三选一)
- 单笔购买≥6支 **一抗**,可挑选2个礼品
- 促销期间累计购买≥6支 **一抗**,且单笔购买≥3支,可挑选2个礼品



爱奇艺钻石会员卡



Tivoo像素电视音箱



机械键盘

Bio-Techne 旗下两大品牌R&D Systems®和Novus Biologicals®可提供超过168,000种神经科学研究相关抗体,覆盖神经科学关键研究领域,包括:各类神经细胞相关标志物、神经发育、行为与认知、感觉系统、节律、突触传递、信号传导、神经内分泌以及神经退行性疾病研究等。

此外,Bio-Techne 旗下Tocris Bioscience®提供3000多种小分子化合物可用于神经科学研究,包括神经递质、离子通道调节剂、笼状化合物、荧光探针、光控配体(DREADD)、多肽等。

详情请见:<https://www.tocris.com/research-area/neuroscience-research>

## 活动规则

- 本活动仅限中国大陆终端客户参加,Bio-Techne公司代理商、二级经销商及各自员工参加无效
- 下单必须填写促销代码,否则不予发放礼品
- 每人最多可领取2个礼品
- 符合条件的用户,Bio-Techne 公司将于活动结束后一个月内电话联系发放礼品
- 不可与其他促销活动或特价共享
- 本活动最终解释权归Bio-Techne

## Novus促销明星抗体列表

货号	抗体	包装	适用物种	适用检测	文献引用
NB100-2220	LC3B Antibody	0.1ml	Hu, Mu, Rt, Po, Av, Ba, Bv, Ca, In, Mk, Pm	WB, Simple Western, ELISA, Flow, IB, ICC/IF, IHC, IHC-Fr, IHC-P, IP, PLA, ChIP, KO	★★★★★
NB500-201	Survivin Antibody	0.1ml	Hu, Mu, Rt, Ca, Fe, GP, Ha	WB, Simple Western, ChIP, ELISA, Flow, ICC/IF, IHC, IHC-Fr, IHC-P, IP	★★★★★
NB400-105	ABCA1 Antibody	0.1ml	Hu, Mu, Rt, Po, Ca, Ch, Ha, Md, Rb	WB, Simple Western, ChIP, ELISA, Flow, ICC/IF, IHC, IHC-Fr, IHC-P, IP, GS	★★★★★
NB100-2323	IRE1 alpha [p Ser724] Antibody	0.1 ml	Hu, Mu, Rt, Po, Ma, Mk, Pm, Rb	WB, ELISA, ICC/IF, IHC, IHC-Fr, IHC-P, IP	★★★★★
NB500-170	Ki-67/MKI67 Antibody	0.1 ml	Hu, Mu, Rt, Po	WB, ICC/IF, IHC, IHC-Fr, IHC-P	★★★★
BC100-494	PINK1 Antibody	0.1 ml	Hu, Mu, Rt, Dr, Rb	WB, ICC/IF, IHC, IHC-P, IP, PEP-ELISA	★★★★★
NB300-109	Tyrosine Hydroxylase Antibody	0.1 ml	Hu, Mu, Rt, Dr, I, Ma	WB, Simple Western, ICC/IF, IHC, IHC-Fr, IHC-P, ICC/IF, IHC-FrFl	★★★★★
NBP1-04676	PGC1 alpha Antibody	0.1 ml	Hu, Mu, Rt, Po, Ha, Sq, Ca, Eq, Pm	WB, ChIP, Flow, Flow-IC, ICC/IF, IHC, IHC-Fr, IHC-P, IP	★★★★
NB300-143	GAP-43 Antibody	0.1 ml	Hu, Mu, Rt, Po, Bv, Ca, Ch, Eq, Pm	WB, ICC/IF, IHC, IHC-Fr, IHC-P	★★★★
NB400-144	CD36/SR-B3 Antibody	0.1 ml	Hu, Mu, Rt, Po, Bv, Pm	WB, ICC/IF, IHC, IHC-Fr, IHC-P	★★★★
NB300-144	Laminin Antibody	0.1 ml	Hu, Mu, Rt, ChHa, In, Rb, Sh	WB, Flow, ICC/IF, IHC, IHC-Fr, IHC-P, IHC-FrFl	★★★★
NB100-355	RPE65 Antibody (401.8B11.3D9)	0.2 ml	Hu, Mu, Rt, Po, Bv, Ca, Ch, Xp	WB, Flow, ICC/IF, IHC, IHC-Fr, IHC-P, CyTOF-ready, ICC/IF	★★★★
NB300-232	SCP3/SYCP3 Antibody	0.1 ml	Hu, Mu, Rt, Po, Bv, Ch, Fe, Pa	WB, ICC/IF, IHC, IHC-Fr, IHC-P	★★★★
NB110-89474	CD11b Antibody	0.1 ml	Hu, Mu, Rt, Bv	WB, Simple Western, Flow, ICC/IF, IHC, IHC-Fr, IHC-P, Single Cell Western	★★★★
NB300-268	LRRK2 Antibody	0.1 ml	Hu, Mu, Bv, Ce, I	WB, Flow, ICC/IF, IHC, IHC-Fr, IHC-P, IP	★★★★
NB300-229	SCP1 Antibody	0.1 ml	Mu, Rt, Ma, Pa, Hu(-)	WB, Simple Western, ChIP, ICC/IF, IHC, IHC-Fr, IHC-P, IP	★★★★
NB300-141	GFAP Antibody	0.05ml	Hu, Mu, Rt, Po, Bv, Eq	WB, Simple Western, ICC/IF, IHC, IHC-Fr, IHC-P	★★★★
NB400-148	Niemann-Pick C1 Antibody	0.1 ml	Hu, Mu, Rt, Po, ChHa, Pm	WB, EM, ICC/IF, IHC, IHC-P, KO	★★★★
NB300-605	iNOS Antibody	0.2 ml	Hu, Mu, Rt	WB, ICC/IF, IHC, IHC-P	★★★★
NB300-119	NK1R Antibody	0.1 ml	Hu, Mu, Rt, GP	WB, Flow, ICC/IF, IHC, IHC-P	★★★★
NB300-213	MAP2 Antibody	0.05 ml	Hu, Mu, Rt	WB, ICC/IF, IHC, ICC/IF	★★★★
NB300-164	Bestrophin 1 Antibody (E6-6)	0.1 ml	Hu, Po, Ca, Pm, Rt(-)	WB, ICC/IF, IHC-Fr, IHC-P, IP	★★★★
NB110-55288	DRP1 Antibody	0.1 ml	Hu, Mu, Rt, Fi, Pm, Bv	WB, Simple Western, Flow, ICC/IF, IHC, IHC-P, IP	★★★
NB300-101	NK1R Antibody	0.1 ml	Hu, Mu, Rt, GP, Ca	WB, ICC/IF, IHC, IHC-Fr, IHC-P	★★★
NB600-1335	GADD153/CHOP Antibody (9C8)	0.1 ml	Hu, Mu, Rt, Pm	WB, Simple Western, GS, ICC/IF, IHC, IHC-P, IP	★★★
NB110-40763	TRPA1 Antibody	0.1 ml	Hu, Mu, Rt, GP	WB, Flow, ICC/IF, IHC, IHC-Fr, IHC-P	★★★
NB600-404	F4/80 Antibody (Cl-A3-1)	0.125 mg	Hu, Mu	WB, EM, Flow, ICC/IF, IHC, IHC-Fr, IHC-P, IP, RIA	★★★★
NB110-37235	SOX2 Antibody	0.1 ml	Hu, Mu, Sh, Ch	WB, Flow, ICC/IF, IHC, IHC-P	★★★
NBP2-33337	CD68/SR-D1 Antibody (FA-11)	0.1mg	Mu	WB, Flow, Flow-IC, ICC/IF, IHC, IHC-Fr, IHC-P, IP	★★★
NB100-689	COX-2 Antibody	0.5 ml	Hu, Mu, Rt	WB, Simple Western, IHC, IHC-P	★★★
NB100-2322	HMGB1/HMG-1 Antibody	0.1 ml	Hu, Mu, Rt, Bv, Ca, Rb, Sh, Po, Eq	WB, Simple Western, ELISA, Flow, Flow-IC, ICC/IF, IHC, IHC-P	★★★
NB300-223	Vimentin Antibody	0.1 ml	Hu, Mu, Rt, Po, Bv, Ca, Ch, Eq	WB, ICC/IF, IHC-Fr	★★★
NB100-2288	BMAL1 Antibody	0.1 ml	Hu, Mu, Rt, Pm	WB, ChIP, Flow, Flow-IC, ICC/IF, IHC, IHC-Fr, IHC-P	★★★
NB100-77417	CD45 Antibody (30-F11)	0.5mg	Hu, Mu	WB, Flow, ICC/IF, IHC, IHC-Fr, IHC-P, In vivo, IP, CyTOF-ready	★★★
NBP2-13075	beta Amyloid Antibody (MOAB-2)	0.1 ml	Hu, Mu, Rt, Mk	WB, ELISA, ICC/IF, IHC, IHC-Fr, IHC-P, IP, IHC-Fr	★★★
NB600-1071	CD34 Antibody (MEC 14.7)	0.1 ml	Mu, Rt	WB, ELISA, Flow, ICC/IF, IHC, IHC-Fr, IHC-P, IP	★★★
NB110-40766	CD11b/c Antibody	0.1 ml	Hu, Mu, Rt	WB, Flow, ICC/IF, IHC, IHC-Fr, IHC-P	★★★
NB100-2324	IRE1 alpha Antibody	0.1 ml	Hu, Mu, Rt	WB, ICC/IF, IHC, IHC-P	★★★
NB110-60531	Apolipoprotein E/ApoE Antibody (WUE-4)	0.1 ml	Hu, Mu, Rt(-)	WB, ELISA, Flow, Flow-IC, ICC/IF, IHC, IHC-P, IP, CyTOF-ready	★★★

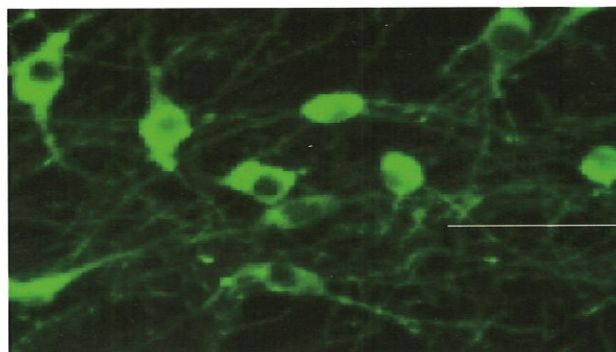
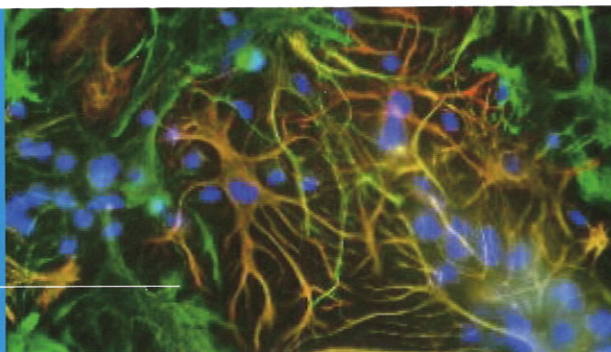
## Novus促销明星抗体列表

货号	抗体	包装	适用物种	适用检测	文献引用
NB300-556	PSD-95 Antibody (6G6-1C9)	0.1 ml	Hu, Mu, Rt, In, Pm	WB, ChIP, Flow, ICC/IF, IHC, IHC-Fr, IHC-P, IP, B/N, ICC/IF	★★★
NB110-55290	OPA1 Antibody	0.1 ml	Hu, Mu, Rt, Po, Ch, Ze, Pm, Ze	WB, Simple Western, IHC, IHC-P	★★★
NB300-201	Neurokinin B Antibody	0.1 ml	Hu, Mu, Rt	WB, ICC/IF, IHC, IHC-Fr, IHC-P	★★★
NBP2-22164	SLC6A3/DAT1 Antibody (mAb16)	0.1 ml	Mu, Rt, Hu(-)	WB, ELISA, ICC/IF, IHC, IHC-P, IP	★★★
NB500-235	Bromodeoxyuridine/Br dU Antibody	0.25 mg	Hu, Mu, Rt, All, GP	ICC/IF, IHC, IHC-Fr, IHC-P, In vitro, IP	★★★
NB100-56352	5-HT7 Antibody	0.1 mg	Hu, Mu, Rt, Ca	WB, ICC/IF	★★★
NBP1-30052	Choline Acetyltransferase/ChA T Antibody	0.1 ml	Hu, Mu, Rt, Av, Ch, GP, Pm	WB, ICC/IF, IHC, IHC-Fr, IHC-P, IHC-WhMt	★★★
NBP2-24683	STING/TMEM173 Antibody	0.1 mg	Hu, Mu, Ca, Pm, RM, Bv	WB, Flow, ICC/IF, IHC, IHC-P, ICC/IF	★★★
NB300-118	NMDAR1 Antibody (R1JHL)	0.015 mg	Hu, Mu, Rt	WB, ICC/IF, IHC-Fr, IHC-P, IP, ICC/IF	★★★
MAB1416	A2B5 Antibody (105) [Unconjugated]	0.1 mg	Hu, Mu, Rt, Ch	Flow, CyTOF-ready, ICC/IF	★★★
NB100-1028	AIF-1/Iba1 Antibody	0.1mg	Hu, Mu, Rt, Po, Ca	WB, ICC/IF, IHC, IHC-Fr, IHC-P, PEP-ELISA, IHC-FrFl, IHC-WhMt	★★★★★
NB100-59740	Arginase 1/ARG1/liver Arginase Antibody	0.1 mg	Hu, Mu, Rt	WB, Flow, ICC/IF, IHC-Fr, PEP-ELISA	★★
NB110-40686	CD163 Antibody (EDHu-1)	0.1mg	Hu, Po, Bv, GP, Pm, RM, Sh	WB, ELISA, Flow, Flow-CS, IA, ICC/IF, IHC, IHC-Fr, IHC-P	★★
NBP1-90020	MMR/CD206/Mannose Receptor Antibody	0.1 ml	Hu, Mu, Po, Pm	WB, ICC/IF, IHC, IHC-P	★★
NB120-16518	CD133 Antibody	0.1 mg	Hu, Mu, Rt, Po	WB, ChIP, ELISA, Flow, ICC/IF, IHC, IHC-Fr, IHC-P	★★★
NB100-74396	CXCR4 Antibody	0.1 ml	Hu, Ms, Rt	WB, ICC, IHC, IHC-P	★★★
NBP1-77686	RBFOX3/NeuN Antibody	0.1ml	Hu, Ms, Rt,Bv	WB, Flow, ICC/IF, IHC, IHC-Fr, IHC-P, IHC-FrFl	★★
NB300-199	GABA-A R beta 3 Antibody	0.1 ml	Hu, Mu, Rt	WB, Simple Western, IHC, IHC-P, ICC/IF, IHC-FrFl	★★
NB300-104-100ul	Synapsin I Antibody	0.1 ml	Hu, Mu, Rt, GP, Pm	WB, ICC/IF, IHC, IHC-Fr, IHC-P, IP, IHC-FrFl	★★★★★
NB100-1604	Nestin Antibody	0.25 ml	Hu, Mu, Rt	WB, ICC/IF, IHC, IHC-Fr, IHC-P	★★★★★
NB100-78486	Notch-1 Antibody (mN1A)	0.1 ml	Hu, Mu, Rt(-)	WB, Flow, ICC/IF, IHC, IHC-P, IP, CyTOF-ready, KO	★★
NBP1-49461	Stathmin-2/STMN2 Antibody	0.05 ml	Hu, Mu, Rt, BvS	WB, ICC/IF, IHC, IHC-Fr, In vivo	★★★
NBP1-76910	APP Antibody	0.1 mg	Hu, Mu, Rt, Po, GP	WB, ELISA, ICC/IF, IHC, IHC-P	★
NB100-98682	BDNF Antibody	0.1 ml	Hu, Mu, Rt, Ze	WB, ICC/IF, IHC, IHC-Fr, IHC-P	★★
NBP2-24589	PER1 Antibody	0.1 mg	Hu, Bv, Ca, Eq, Pm, Mu, Rt	WB, IHC-P	★
NB100-125	PER2 Antibody	0.1 ml	Hu, Mu, Rt	WB, ICC/IF	★
NB300-221	GAPDH Antibody (1D4)	0.1 ml	Hu, Mu, Rt, Po, Av, Bv, Ch, ChHa, Eq, Fe, Ha, Op, Pm, Rb, Sh, Ze	WB, Simple Western, ChIP, ICC/IF, IHC, IP	★★★★★
AF566	Neuropilin-1 Antibody [Unconjugated]	0.1 mg	Mu, Rt	WB, Flow, IHC, B/N, CyTOF-ready	★★★★★
MAB161-100	DC-SIGN/CD209 Antibody (120507)	0.1mg	Hu	WB, Flow, IHC, B/N, CyTOF-ready, ICC/IF	★★★★★
AF1729	TREM-2 Antibody	0.1mg	Mu	WB, ICC/IF	★★★
AF771	IL-1 RI Antibody [Unconjugated]	0.1mg	Mu	WB, IHC, B/N	★★★
MAB230-100	IL-4 R alpha Antibody (25463) [Unconjugated]	0.1mg	Hu	WB, Flow, IHC, B/N, CyTOF-ready	★★★
NB400-104	SR-BI Antibody	0.1 ml	Hu, Mu, Rt, Po, ChHa, Ha, Md, Pm, Rb, SyHa	WB, Simple Western, Flow, ICC/IF, IHC, IHC-Fr, IHC-P, IP	★★★★★
AF-212-NA	GDNF Antibody	0.1 mg	Hu, Rt	WB, IHC, B/N	★★★★★
AF1494	TrkB Antibody [Unconjugated]	0.1 mg	Mu	WB, Simple Western, IHC, B/N	★★★
AF1404	TrkC Antibody [Unconjugated]	0.1 mg	Mu, Rt	WB, Simple Western, IHC, B/N	★★★

另有现货二抗可搭配选择(二抗不参与促销活动)

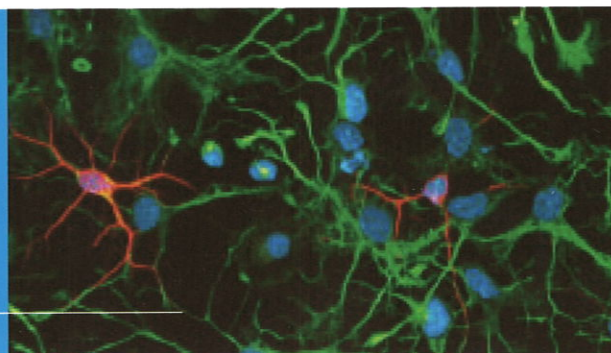
货号	二抗名称	规格	推荐应用
NL001	Donkey Anti-Goat IgG NL557 Affinity Purified PAb	0.5 mL	ICC/Flow
NL002	Donkey Anti-Goat IgG NL637 Affinity Purified PAb	0.5 mL	ICC/Flow
NL003	Donkey Anti-Goat IgG NL493 Affinity Purified PAb	0.5 mL	ICC/Flow
NL004	Donkey Anti-Rabbit IgG NL557 Affinit Purified PAb	0.5 mL	ICC/Flow
NL005	Donkey Anti-Rabbit IgG NL637 Affinit Purified PAb	0.5 mL	ICC/Flow
NL006	Donkey Anti-Rabbit IgG NL493 Affinity Purified PAb	0.5 mL	ICC/Flow
NL007	Donkey Anti-Mouse IgG NL557 Affinity Purified PAb	0.5 mL	ICC/Flow
NL008	Donkey Anti-Mouse IgG NL637 Affinity Purified PAb	0.5 mL	ICC/Flow
NL009	Donkey Anti-Mouse IgG NL493 Affinity Purified PAb	0.5 mL	ICC/Flow

ICC/IF:使用GFAP抗体(货号:NB300-141)(红色)和Vimentin抗体(货号:NB300-223)(绿色)染色混合培养神经元和胶质细胞。成纤维细胞只表达Vimentin蛋白,所以是绿色的。星形胶质细胞有的同时表达Vimentin和GFAP蛋白,呈现出金黄色,而有的星形胶质细胞主要表达GFAP,从而呈现红色。蓝色是细胞核。



ICC/IF: Tyrosine Hydroxylase Antibody [NB300-109] - 小鼠脑黑质多巴胺能神经元。图片来自客户。

绿色信号来自:山羊抗大鼠Nestin一抗(货号:AF2736)与Donkey anti-goat NorthernLights-493二抗(货号:NL003)的染色结果;红色信号来自:Neuron-specific mouse anti-beta-III tubulin一抗(TuJ1;货号:MAB1195)与Donkey anti-mouse NorthernLights-557二抗(货号:NL007)的染色结果;蓝色为DAPI复染细胞核。



biotechne®  
brands

R&D SYSTEMS

NOVUS BIOLOGICALS

TOCRIS

PrimeGene

proteinsimple

A&D



微信扫码 联络我们

美国总部:  
614 McKinley Place NE Minneapolis, MN 55413 USA

中国总部:  
地址: 上海市长宁路1193号来福士广场3号办公楼19层01单元  
电话: 021-52380373 技术支持热线: 8009881270; 4008213475  
邮箱: info.cn@bio-techne.com 网址: www.bio-techne.com